



GE Type DH Plug-In or Feeder Busway

- 100-Amperes
- 3-Wire, 4-Wire
- 600 Volts ac max.
- 250 Volts dc max.
- *Now Standard 14,000 RMS Sym.*



And still the convenience
of Busway at the cost of
installed cable!

GE Type DH Busway For Small Blocks of

New Type DH Busway is:

- ***A feeder or plug-in Busway system***
- ***Quickly assembled and installed with one pair of hands and one screwdriver***
- ***Completely reusable***
- ***Low cost with proven reliability***
- ***Standard 14,000 AIC rms sym.***
- ***Designed to allow both busway sides to carry plugs at the same time***

If you can do the job with exposed wire and conduit you can do it better with GE's 100 amp busway. With Type DH busway you can save on every installation dollar and get plug-in flexibility as well.

Type DH busway can serve as either a plug-in or feeder system, with 10 outlets available in every 10-foot length, 5 outlets per side. Plugs can be inserted on both sides. It may be tapped by circuit breaker, fusible or unfused plugs.

Small, light and sturdy, it can be installed with a single screwdriver and one pair of hands, and it can be modified, extended or taken down and reinstalled in another area with complete reuse of all parts.

Type DH busway is equally at home in the large industrial plant or the small machine shop. Type DH busway provides a convenient power source for small machines, portable electric tools, lights and a variety of other electrical equipment.

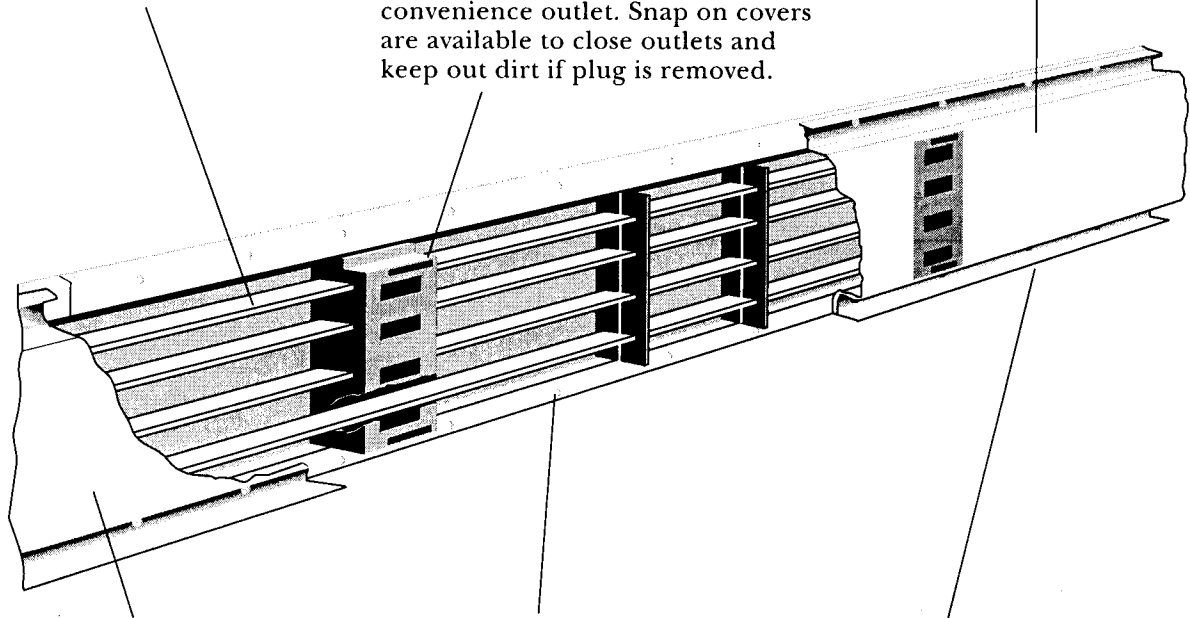
Readily Available Power

DH Busway's many features and flexibility of use combine to give you a low material cost plus minimum installation cost and a record of proven reliability.

Conductors – Solid bars of electrical conductor electro-silver plated aluminum, or tin plated, copper.

Plug-in Outlets – Easily removed knockout exposes dead front, polarized receptacle similar to normal convenience outlet. Snap on covers are available to close outlets and keep out dirt if plug is removed.

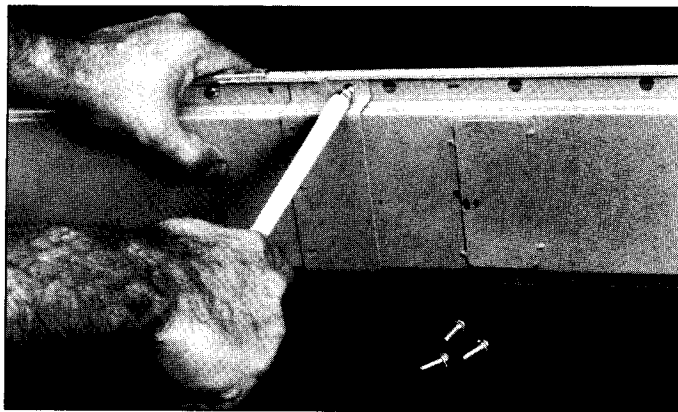
Housing – Rigid, sheet steel, totally encloses bus bars with I-beam flanges.



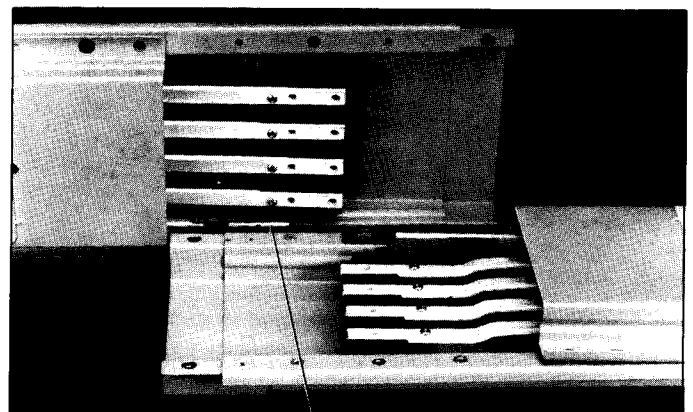
Finish – Light-grey (ANSI-61) baked enamel over rust inhibitor. Protects housing and blends with surroundings and other equipment.

Bus Bar Supports – Split insulating blocks support bus bars between plug outlets permitting maximum contact surface for clothespin type stabs on plugs. Intermediate supports hold bus bars for high 14,000 amps short circuit strength.

Mounting – UL listed for 10-foot hanger spacing in edgewise or vertical riser position. Convenient snap-on hangers for single or parallel runs in edgewise position.



Fast Assembly – Overlapping joints are simply and securely connected, both mechanically and electrically, at the same time. Turning six screws (into captive nuts) completes the twofold connection simultaneously. . . saving installation time and trouble. This also allows any length to be removed from the system without disturbing adjacent lengths.



Positive Electrical Joint – Long overlap of bus bars for high conductivity. Insulating blocks backed up with heavy compression springs for trouble-free connection. Compensates for differential expansion between bus bars and housing. Arrow points to optionally available internal ground bar.

Electrical Data

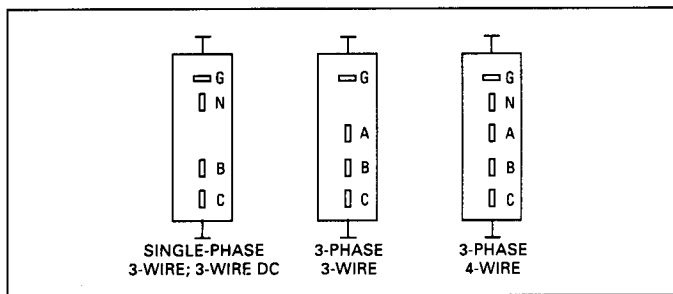
BUSWAY SELECTION

All Type DH busway system components have been tested and are listed by Underwriters' Laboratories, Inc., in accordance with their standards and the requirements of the National Electrical Code. (Type DH busway complies with Federal specifications W-B-811B as type IV, Class 2, style B.)

The 100-ampere current rating is based on no portion of the busway having a temperature rise exceeding 55°C above ambient room temperature when carrying rated load.

When carrying rated load, the busway's external housing temperature will not exceed 10°C above ambient.

The following diagram illustrates the bus bar arrangement in each system.



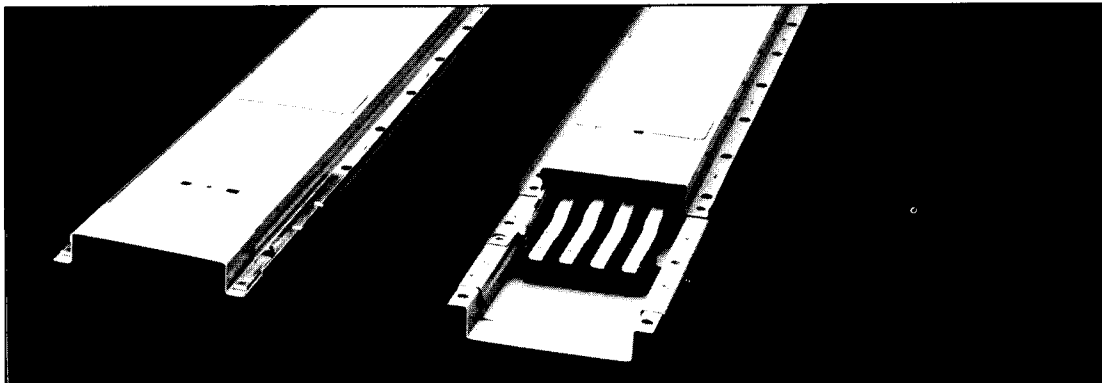
Short circuit ratings are assigned based on tests performed in accordance with UL test procedures. Type DH busway will perform mechanically and electrically the same before and after a short circuit test on an available of 14,000 rms amperes symmetrical.

When properly protected by maximum 100 ampere UL listed Class K-1, K-5 or J fuses, the DH Busway may be applied to a system with a short circuit current available up to the UL listed short circuit rating of the fuses.

The single-phase, three-wire system is utilized on single-phase and dc applications. In this system, the A-phase bar is omitted. In the three-phase, three-wire system the A, B, and C phase bars are included but the neutral is eliminated. Finally, the three-phase, four-wire system includes all phase bars plus neutral. The four-wire construction is often used to provide three separately controllable circuits for feeding, lighting or small load requirements.

Any bus bar not used for power purposes may be used as an equipment ground bus. In this case, connection should be provided between the stab terminal and the grounding terminal in each plug so there will be no difference in potential between the busway housing and the equipment ground bus.

Note, also, that type DH Busway is available with a separate internal ground bar.



Two straight lengths of Type DH Busway showing opposite joint ends.

VOLTAGE DROP

Table 5.1. Distributed Loading 3-phase drop per 100 ft. at rated current.

Percent Power Factor	Aluminum Bus Bars	Copper Bus Bars
20	0.93	0.74
30	1.17	0.88
40	1.40	1.02
50	1.63	1.16
60	1.86	1.28
70	2.07	1.40
80	2.27	1.51
90	2.45	1.59
95	2.52	1.62
100	2.51	1.56

The three-phase, line-to-line voltage drop per 100 feet at rated current and various power factors with the load evenly distributed along the run is shown in the above table. If the load is concentrated at the end of the run, multiply the values by two.

The single-phase, line-to-line voltage drop for 3-wire systems is obtained by multiplying the three-phase values in the table by 1.155.

The voltage drop for other than rated load may be obtained by multiplying the voltage drop for rated load by the ratio of actual load to *rated load*. Similarly, the voltage drop for lengths other than 100 feet may be obtained by multiplying the voltage drop for 100 feet by the ratio of actual length to 100 feet.

Thus, actual voltage drop (balanced three-phase system) equals:

$$\text{Voltage drop at rated load} \times \frac{\text{Actual load}}{\text{rated load}} \times \frac{\text{Actual length}}{100 \text{ feet}}$$

R, X, Z VALUES

The following electrical constants for three-phase and single-phase systems, expressed in ohms per 100 feet line-to-neutral, apply to Type DH busway:

- dc resistance – .0280
- 60-Hz ac resistance – .0290
- reactance – .0050
- impedance – .0300

The resistance is based on the normal temperature when carrying rated current with distributed load. The values are average for the three phases.

APPLICATION CONSIDERATIONS

Type DH busway housing and accessories are finished in ANSI 61 baked grey enamel forming an excellent protective coating for clean, dry atmospheres, and is listed by Underwriters' Laboratories, Inc. for use in such applications.

The following considerations should be observed when specifying or installing type DH Busway:

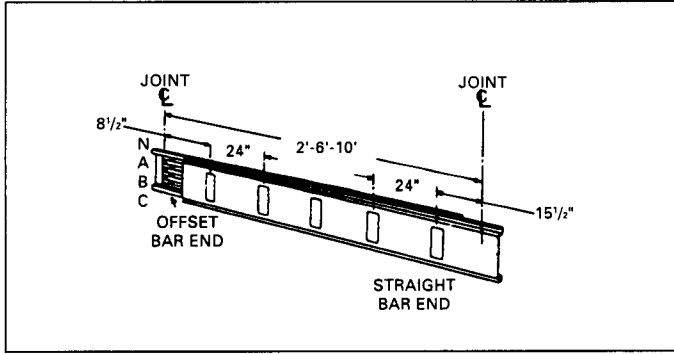
1. It should never be used in hazardous (especially explosive) atmospheres.
2. It should not be used where dust and dirt (especially of the flammable type) are present in excessive quantities. Under most conditions, however, Type DH busway with the knockouts in place will deter the entrance of foreign matter.
3. It should not be used in outdoor or excessively damp locations. The housing is not weatherproof or dripproof.

Physical Data

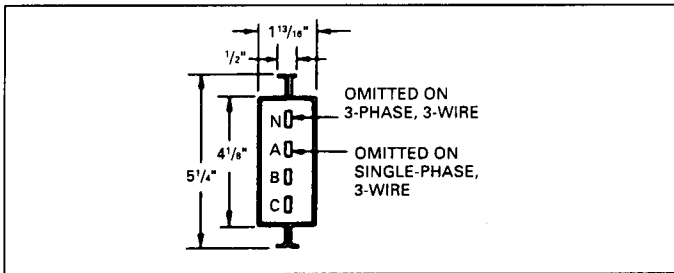
To simplify ordering, the 2-foot lengths are furnished in only 4-wire construction and may be used on any system without modification. Straight lengths are available in 2-, 6 and 10-foot dimensions. Add suffix "G" to catalog numbers for straight lengths and fittings when internal ground bar is required.

STRAIGHT LENGTHS

Standard Package - 2



CROSS SECTION For All Systems



Length (ft.)	Cat. No. ① Aluminum	Pkg. Wt. (lbs.)	Cat. No. ① Copper	Pkg. Wt. (lbs.)	Plug Outlets ②
Single-Phase, Three-Wire and 3-Wire					
10	DP1ⓐA01SL10	52	DP1ⓐC01SL10	54	5
6	DP1ⓐA01SL06	33	DP1ⓐC01SL06	36	3
2	DP1ⓐA01SL02	12	DP1ⓐC01SL02	14	1
Three-Phase, Three-Wire					
10	DP3ⓐA01SL10	52	DP3ⓐC01SL10	54	5
6	DP3ⓐA01SL06	33	DP3ⓐC01SL06	36	3
2	DP3ⓐA01SL02	12	DP3ⓐC01SL02	14	1
Three-Phase, Four-Wire					
10	DP4ⓐA01SL10	52	DP4ⓐC01SL10	54	5
6	DP4ⓐA01SL06	33	DP4ⓐC01SL06	36	3
2	DP4ⓐA01SL02	12	DP4ⓐC01SL02	14	1

① Insert H for integrated housing or G for internal ground bus.
② Number per side. Plugs can be mounted back-to-back.

ADJUSTABLE LENGTH All systems (No outlets)

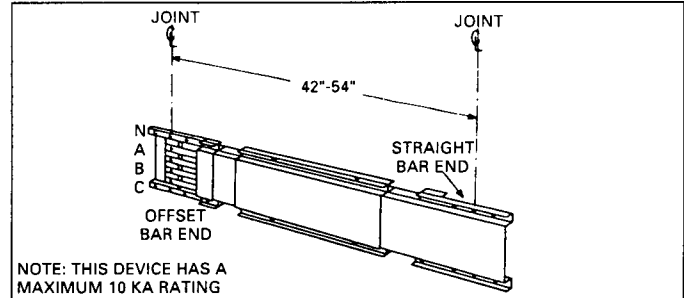
Catalog No: Aluminum-DP4ⓐA01ASST

Copper-DP4ⓐC01ASST

Standard Package-2, Package Weight-30 lbs.

① Insert H for integrated housing or G for internal ground bus.

This eliminates the need for exact measurements before installation. It is easily adjustable from 42 to 54 inches. If the system is relocated, the adjustable length readily adapts the system to new dimensions. It should not be used as an expansion fitting. No outlets are included, and 4-wire is furnished for all systems.

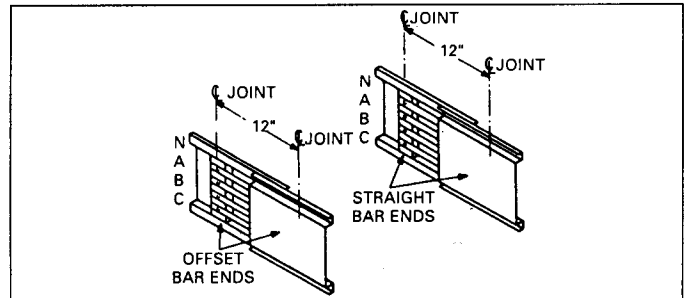


NOTE: THIS DEVICE HAS A MAXIMUM 10 KA RATING

REVERSING FITTING One outlet each side

Standard Package - 1

It allows the run to be turned 180°. This permits joint screws to be on the accessible side... facing away from walls etc., that would otherwise interfere with tightening.



Description Bar Ends	Cat. No.		Pkg. Wt. (lbs.)
	Aluminum	Copper	
Straight	DP4ⓐA01RSST	DP4ⓐC01RSST	4
Offset	DP4ⓐA01ROST	DP4ⓐC01ROST	4

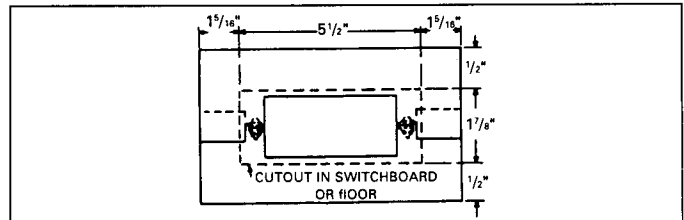
① Insert H for integrated housing or G for internal ground bus.

FLANGE

Catalog No: DH1F

Standard Package-10, Package Weight-14 lbs.

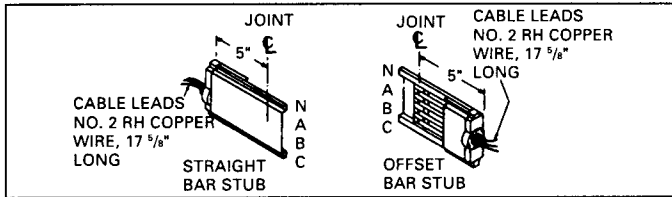
Gaps can appear where a busway run passes through a wall. A Flange on each side of the wall neatly conceals the gaps. The flange may be located at any point.



END STUB

Standard Package – 1

Used to connect DH busway to switchboards, panelboards, load centers or similar devices. Fits standard 2" knockout (2½" dia.) Standard lock nut included. Also included are 3-or 4-cable leads, 17" long, of #2 RH copper wire with ends skinned for lug attachment.



Offset Bar End Stub

Description	Cat. No.		Pkg. Wt. (lbs.)
	Aluminum	Copper	
Single-Phase, 3-wire, dc	DP1ⓐA01SOST	DP1ⓐC01SOST	4
3-Phase, 3-wire	DP3ⓐA01SOST	DP3ⓐC01SOST	4
3-Phase, 4-wire	DP4ⓐA01SOST	DP4ⓐC01SOST	5

ⓐ Insert H for integrated housing or G for internal ground bus.

Straight Bar End Stub

Description	Cat. No.		Pkg. Wt. (lbs.)
	Aluminum	Copper	
Single-Phase, 3-wire, dc	DP1ⓐA01SSST	DP1ⓐC01SSST	4
3-Phase, 3-wire	DP3ⓐA01SSST	DP3ⓐC01SSST	4
3-Phase, 4-wire	DP4ⓐA01SSST	DP4ⓐC01SSST	5

ⓐ Insert H for integrated housing or G for internal ground bus.

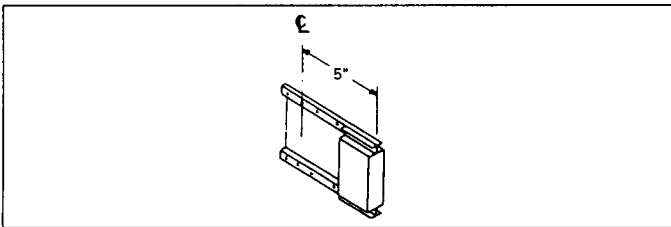
END BOX Suitable for use either end

Catalog No: Aluminum–DP4ⓐA01EBST

Copper–DP4ⓐC01EBST

Standard Package–10, Package Weight–14 lbs.

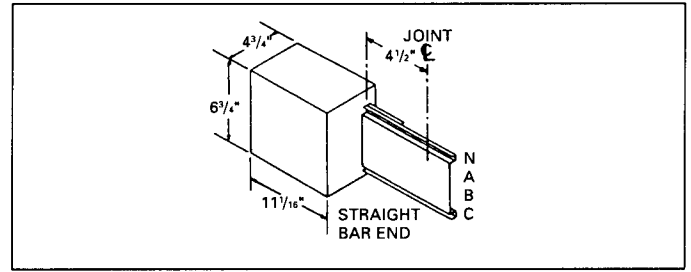
ⓐ Insert H for integrated housing or G for internal ground bus.



TAP BOXES

All tap boxes include 1¼" x 2" concentric knockouts all sides. The boxes have a hinged front cover. The back is flush with the back busway for wall mounting. The lugs are silver-plated No. 14-1/0 mechanical solderless type. Center sectionalizing tap boxes have separate terminals for the two busway runs. When each busway run is to be fed separately, feeders are brought to each set of terminals. For center feeding, run the cable through one lug into the adjacent lug.

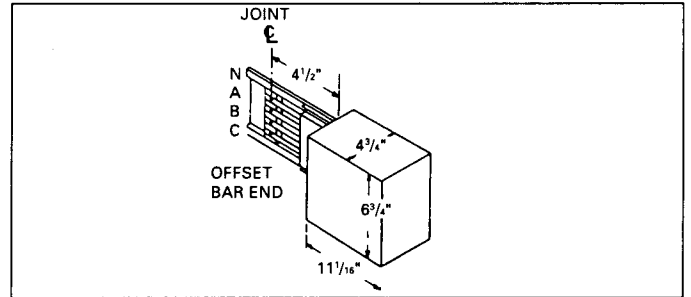
Straight Bar End Tap Box



Description	Cat. No. ⓐ		Pkg. Wt. (lbs.)
	Aluminum	Copper	
Single-Phase, 3-wire, dc	DP1ⓐA01TSST	DP1ⓐC01TSST	8
3-Phase, 3-wire	DP3ⓐA01TSST	DP3ⓐC01TSST	8
3-Phase, 4-wire	DP4ⓐA01TSST	DP4ⓐC01TSST	8

ⓐ Insert H for integrated housing or G for internal ground bus.

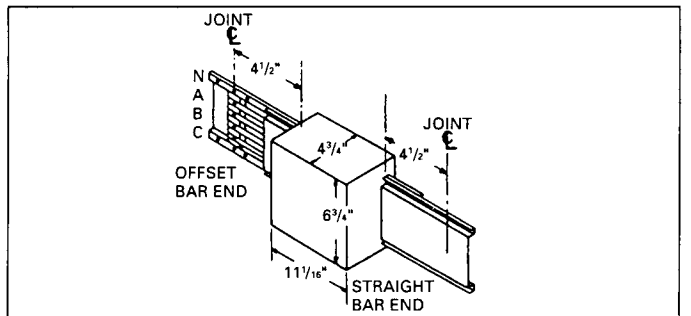
Offset Bar End Tap Box



Description	Cat. No. ⓐ		Pkg. Wt. (lbs.)
	Aluminum	Copper	
Single-Phase, 3-wire, dc	DP1ⓐA01TOST	DP1ⓐC01TOST	8
3-Phase, 3-wire	DP3ⓐA01TOST	DP3ⓐC01TOST	8
3-Phase, 4-wire	DP4ⓐA01TOST	DP4ⓐC01TOST	8

ⓐ Insert H for integrated housing or G for internal ground bus.

Center Tap Box



Description	Cat. No. ⓐ		Pkg. Wt. (lbs.)
	Aluminum	Copper	
Single-Phase, 3-wire, dc	DP1ⓐA01CCST	DP1ⓐC01CCST	9
3-Phase, 3-wire	DP3ⓐA01CCST	DP3ⓐC01CCST	9
3-Phase, 4-wire	DP4ⓐA01CCST	DP4ⓐC01CCST	9

ⓐ Insert H for integrated housing or G for internal ground bus.

Physical Data

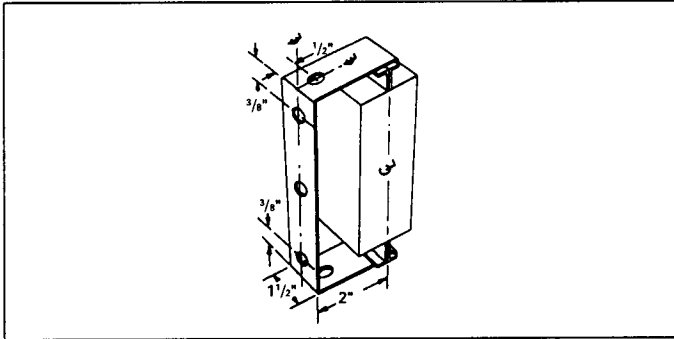
HANGERS

Universal Hanger

Catalog No: DH1HU1

Standard Package-100, Package Weight-200 lbs.

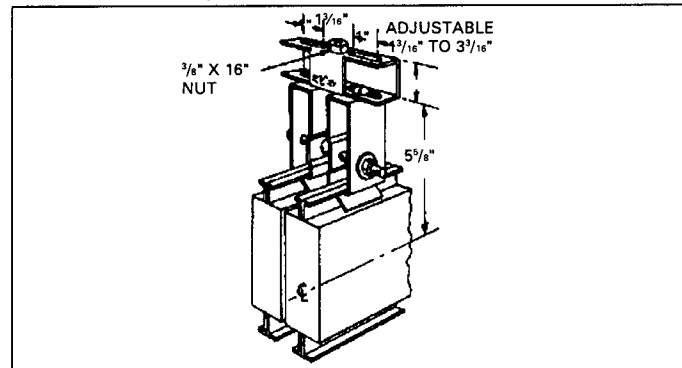
Universal and edgewise snap-on hangers rigidly support Type DH busway. Type DH busway may be hung on 10-foot centers in the edgewise or vertical riser positions in accordance with the National Electrical Code. The double edgewise hanger is used for hanging parallel busway runs on a single rod.



Edgewise Hanger (Double Run)

Catalog No: DE1HED

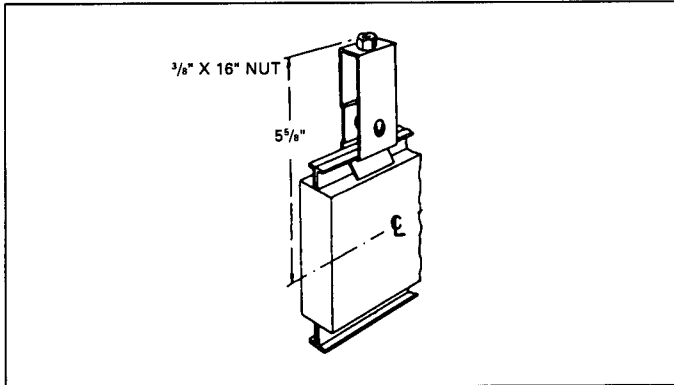
Standard Package-10, Package Weight-10 lbs.



Edgewise Hanger (Single Run)

Catalog No: DE1HES

Standard Package-100, Package Weight-25 lbs.



ELBOWS, TEES, CROSSES

Elbows, tees and crosses all have the same cross sectional dimensions as standard straight lengths, however, they have no plug outlets.

To simplify ordering, four-wire construction is provided for all systems.

Elbows are used to change the direction of a DH busway run 90 degrees. Tees are used to tap a main run in a single direction, or dead end a run and direct it in two directions. The up and left tees have the offset bar end on the tapoff leg.

Crosses, like tees, furnish branch tapoffs on both sides of the main run. The up and left legs of the cross have the straight bar ends and the down and right legs have the offset bar ends.

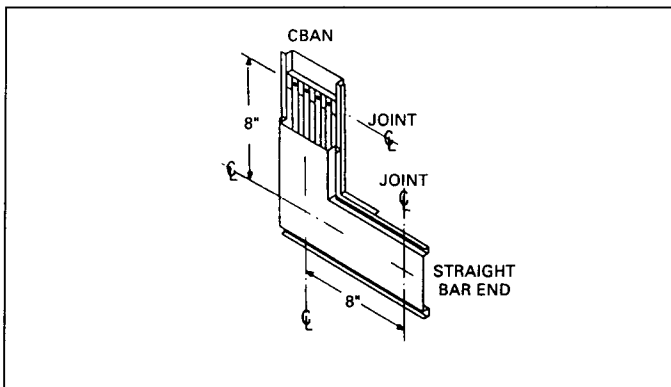
ELBOWS

Up Elbow

Catalog No: Aluminum-DP4ⓐA01EUST
Copper-DP4ⓐC01EUST

Standard Package-1, Package Weight-4 lbs.

① Insert H for integrated housing or G for internal ground bus.

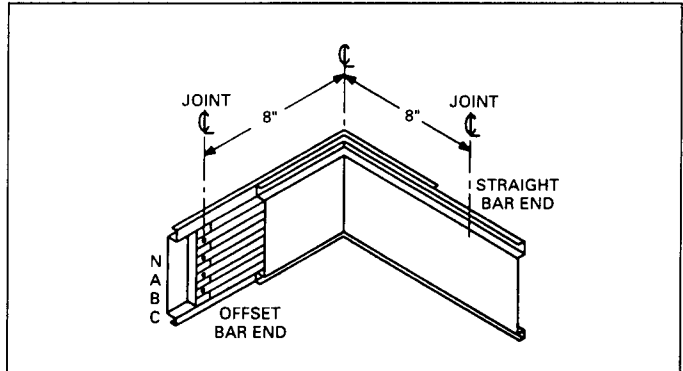


Left Elbow

Catalog No: Aluminum-DP4ⓐA01ELST
Copper-DP4ⓐC01ELST

Standard Package-1, Package Weight-4 lbs.

① Insert H for integrated housing or G for internal ground bus.

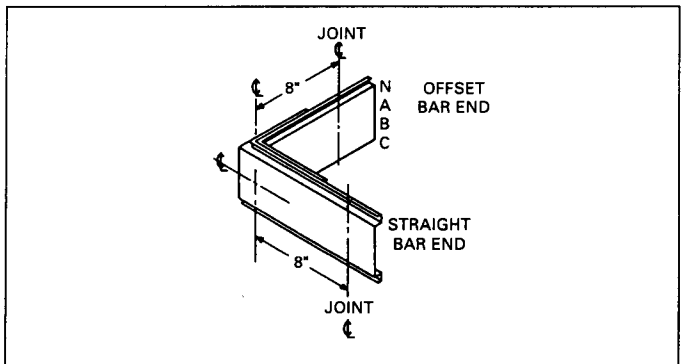


Right Elbow

Catalog No: Aluminum-DP4ⓐA01ERST
Copper-DP4ⓐC01ERST

Standard Package-1, Package Weight-4 lbs.

① Insert H for integrated housing or G for internal ground bus.

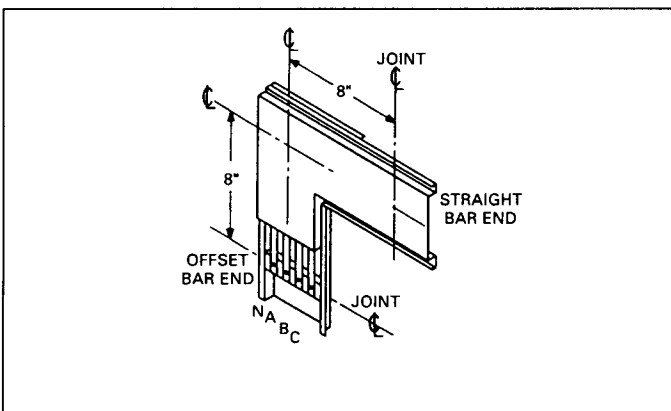


Down Elbow

Catalog No: Aluminum-DP4ⓐA01EDST
Copper-DP4ⓐC01EDST

Standard Package-1, Package Weight-4 lbs.

① Insert H for integrated housing or G for internal ground bus.



NOTE: Devices as shown on this page are used for all 3- and 4-wire systems.

Physical Data

ELBOWS, TEES, CROSSES (CONT'D)

TEES

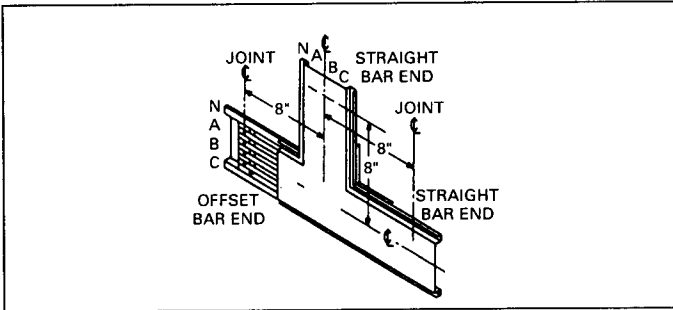
Up Tee

Catalog No: Aluminum-DP4ⓐA01TUST

Copper-DP4ⓐC01TUST

Standard Package-1, Package Weight-7 lbs.

① Insert H for integrated housing or G for internal ground bus.



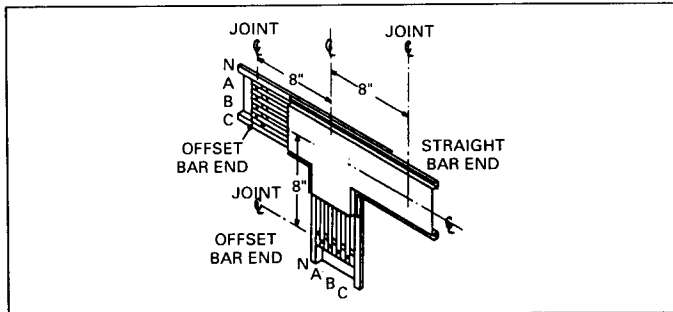
Down Tee

Catalog No: Aluminum-DP4ⓐA01TDST

Copper-DP4ⓐC01TDST

Standard Package-1, Package Weight-7 lbs.

① Insert H for integrated housing or G for internal ground bus.



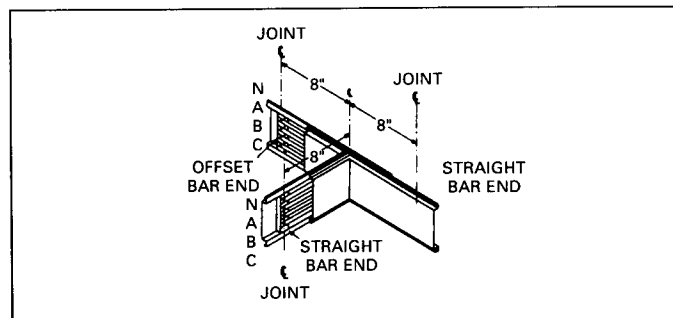
Left Tee

Catalog No: Aluminum-DP4ⓐA01TLST

Copper-DP4ⓐC01TLST

Standard Package-1, Package Weight-8 lbs.

① Insert H for integrated housing or G for internal ground bus.



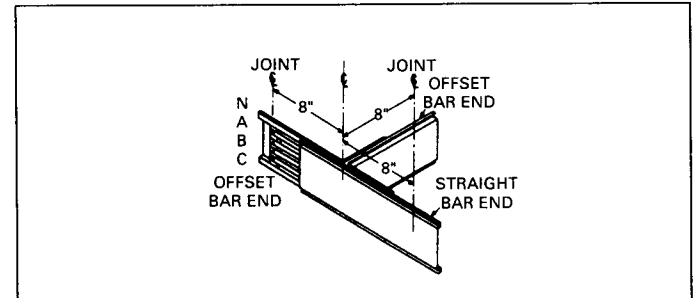
Right Tee

Catalog No: Aluminum-DP4ⓐA01TRST

Copper-DP4ⓐC01TRST

Standard Package-1, Package Weight-8 lbs.

① Insert H for integrated housing or G for internal ground bus.



CROSSES

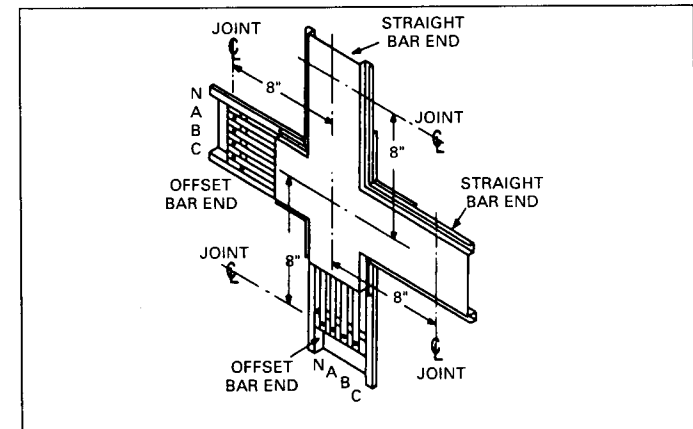
Up-Down Cross

Catalog No: Aluminum-DP4ⓐA01CDST

Copper-DP4ⓐC01CDST

Standard Package-1, Package Weight-8 lbs.

① Insert H for integrated housing or G for internal ground bus.



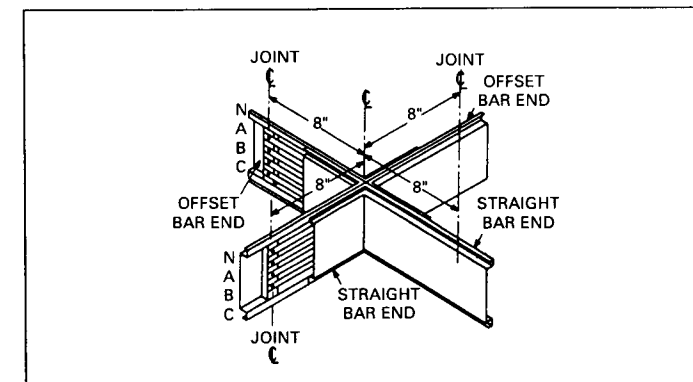
Right-Left Cross

Catalog No: Aluminum-DP4ⓐA01CLST

Copper-DP4ⓐC01CLST

Standard Package-1, Package Weight-8 lbs.

① Insert H for integrated housing or G for internal ground bus.



NOTE: Devices as shown on this page are used for all 3- and 4-wire systems.

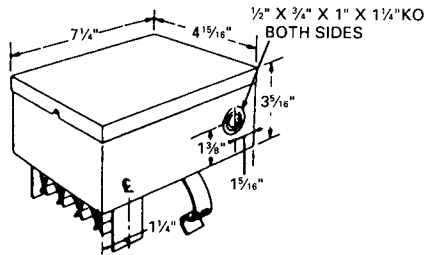
BUSWAY PLUGS

All Type DH busway plugs are totally enclosed for safety. Positive polarization is provided to prevent any incorrect motor rotation or neutral connection. The plug housing is positively grounded before, and after the plug stabs contact the DH bus bars, and a grounding terminal is provided inside the plug housing. Add suffix "G" to plug Cat. No.'s for internal ground stab when plugs are used on type DH Busway lengths with internal ground bar. Dimensions are shown on the following illustrations.

Unfused Plugs

Type TB

Unfused plugs are the lowest cost means of tapping DH busway. These 60 ampere, 600 volt, 3- and 4-wire plugs can be used for taps not over 25 feet long per NEC 240-21. No horsepower rating is available for these plugs.



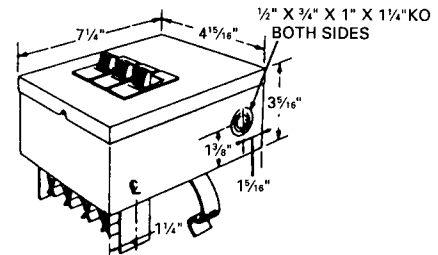
Unfused Type TB

Ampere Rating	Voltage ac	1-phase, 3-wire	3-phase, 3-wire	3-phase, 4-wire
		Catalog Number	Catalog Number	Catalog Number
60	600	DHIP1TB2	DHIP3TB2	DHIP4TB2

Circuit Breaker Plugs

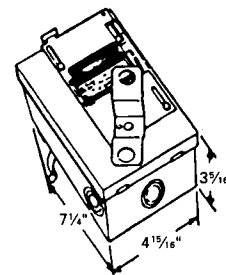
Type TQL

The low-cost Type TQL circuit breaker plug provides overcurrent protection and switching for 240-volt, maximum ac tapoffs. It has plug-in stabs and knock-outs in the hinged cover to accept up to three, 15 to 50 amp Type TQL plug-in circuit breakers. Circuit breakers are ordered separately.



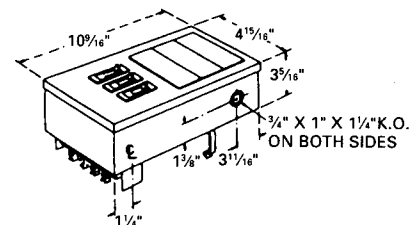
Type TQLX

Type TQLX plugs are essentially the same as the Type TQL plug except the Type TQLX plug is supplied with an external operating handle for hook stick operation. On, Off and Trip breaker positions are visible even with the cover closed. Circuit breakers are ordered separately.



Type TQLR

The Type TQLR plug is designed to accept up to three twin convenience outlets in the plug cover. Blank cover plates are provided to cover unused receptacle spaces. The spacing provided for the receptacles permits the use of standard one, two or three gang cover plates. Circuit breakers, convenience receptacles and gang cover plates are ordered separately.



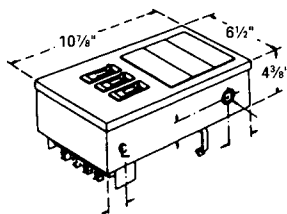
Physical Data

BUSWAY PLUGS (CONT'D)

Circuit Breaker Plugs (Cont'd)

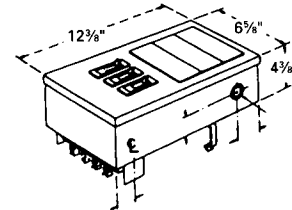
Type TE

Type TE circuit breaker plugs, utilize type TEB, TED4, TED6 circuit breaker plug provides over-current protection and switching for 480/600-volt maximum ac tap-offs. It has bolt-on stabs and knock-outs in the hinged cover to accept up to 3 pole, 15 to 70 amp Type TEB, TED4, TED6 bolt-on circuit breakers. Drawing shows breakers installed. Type TEB, TED4, or TED6 circuit breakers are ordered separately.



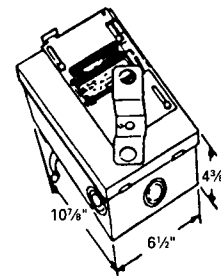
Type TE-R

Type TEBR, TEDR plugs are designed to accept up to three convenience receptacles on the cover, and two receptacles on the sides. Blank cover plates are provided to cover unused receptacle spaces. Order breakers and receptacles separately for field installation.



Type TE-X

Type TEBX and TEDX plugs are essentially the same as the TEB and TED plugs except the TEBX and TEDX plugs are supplied with an external operating handle for hook-stick operation. ON, OFF and TRIP breaker positions are visible even with the cover closed. Circuit breakers are ordered separately.



Circuit Breaker Plugs (As shown on pages 11 and 12)

Ampere Rating	Plug Type	Voltage ac	1-phase, 3-wire	3-phase, 3-wire	3-phase, 4-wire
			Catalog Number ①	Catalog Number ①	Catalog Number ①
With Space Only for Three THQL Breaker Poles					
15-50	TQL TQLX TQLR TQLRC ③ TQLC ③	240	DFPTQL3N DFPTQLX3N DFPTQLR4 DFPTQLRC4 —	DFPTQL3 DFPTQLX3 DFPTQLR3 — —	DFPTQL4 DFPTQLX4 DFPTQLR4 DFPTQLRC4 DFPTQLRC4
With Space Only for Three TEB, TED4, or TED6 Breaker Poles					
15-60 70 ②	TE TEX TER TEC ③ TERC ③	600 Max	DFPTE3N DFPTEX3N DFPTER3N — —	DFPTE3 DFPTEX3 DFPTER3 — —	DFPTE4 DFPTEX4 DFPTER4 DFPTEC4 DFPTERC4

① Add suffix "G" to Catalog Number for ground stab.

② 70A available in 240V max. 2 or 3 pole

③ Screw tightening housing clip

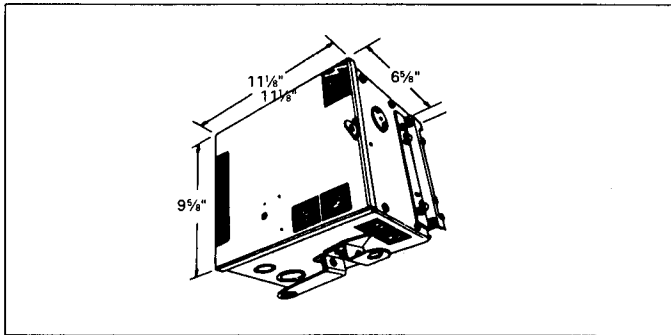
BUSWAY PLUGS (CONT'D)

Circuit Breaker and Fusible Plugs (Cont'd)

Circuit Breaker Plugs

Type TEB, TED

Type TEB, TED circuit breaker plugs, utilize type TEB, TED4, TED6 circuit breakers with external operating handles. Although side operation is furnished as standard, conversion to end wall operation may be easily accomplished in the field. A releasable cover interlock is provided to prevent opening the cover with the breaker ON. The cover interlock can be converted in the field to non-releasable. The handle is the walking beam type with 3/4" holes in the handle for pull-cord or hook-stick operation. Order breakers separately.



Fusible Plugs

Type QMR

This fusible operating switch plug has a Type QMR positive quick-make, quick-break interrupter with a releasable cover interlock which can be field-converted to non-releasable. It also has a releasable "OFF" to prevent switch being turned on with cover open. It has a walking beam type handle with 3/4" holes for pull-cord or hook stick. (The handle is side mounted for shipping but can be located on end wall for horizontal mounting.) NEMA Class H or J fusing is available.

Fusible-Type QMR Externally Operated

With Class H Fuse Clips Fuses Not Included

Ampere Rating	Voltage ac	1-phase, 3-wire ^{①②}	3-phase, 3-wire ^②	3-phase, 4-wire ^②
		Catalog Number ^②	Catalog Number ^②	Catalog Number ^②
30	240	DH421R	DH321R	DH421R
60	240	DH422R	DH322R	DH422R
100	240	DH423R	DH323R	DH423R
30	600	DH461R	DH361R	DH461R
60	600	DH462R	DH362R	DH462R
100	600	DH463R	DH363R	DH463R

① These are three-phase, four-wire plugs. The A phase is ignored.

② Add suffix "G" to Catalog Number for ground stab.

Circuit Breaker Plugs

Ampere Rating	Plug Type	Voltage ac	1-phase, 3-wire	3-phase, 3-wire	3-phase, 4-wire
			Catalog Number ^①	Catalog Number ^①	Catalog Number ^①
With TEB, TED4, or TED6 Breaker Installed					
15	TEB	240	DH41EB	DH31EB	DH41EB
20			DH42EB	DH32EB	DH42EB
30			DH43EB	DH33EB	DH43EB
40			DH44EB	DH34EB	DH44EB
50			DH45EB	DH35EB	DH45EB
70			DH47EB	DH37EB	DH47EB
100			DH410EB	DH310EB	DH410EB
15	TED4	480	DH41ED4	DH31ED4	DH41ED4
20			DH42ED4	DH32ED4	DH42ED4
30			DH43ED4	DH33ED4	DH43ED4
40			DH44ED4	DH34ED4	DH44ED4
50			DH45ED4	DH35ED4	DH45ED4
70			DH47ED4	DH37ED4	DH47ED4
100			DH410ED4	DH310ED4	DH410ED4
15	TED6	600	DH41ED6	DH31ED6	DH41ED6
20			DH42ED6	DH32ED6	DH42ED6
30			DH43ED6	DH33ED6	DH43ED6
40			DH44ED6	DH34ED6	DH44ED6
50			DH45ED6	DH35ED6	DH45ED6
70			DH47ED6	DH37ED6	DH47ED6
100			DH410ED6	DH310ED6	DH410ED6

① Add suffix "G" to Catalog Number for ground stab.

Cataloging

TYPE DH BUSWAY CATALOG NUMBERING SYSTEM

D P 3 H C 01 SL 02

	Description	Code
Product	DH - Busway	D
Type	Plug-in	P
Service	1PH,3W	1
	3PH,3W	3
	3PH,4W 100% Neutral	4
Ground	Integrated Housing	H
	Internal Bus (A)	G
Conductor	Copper	C
	Aluminum	A

Amps	Code
100	10

Configuration	Code
Straight Length	SL
Elbow - Left	EL
Elbow - Right	ER
Elbow - Up	EU
Elbow - Down	ED
Center Cable Tap Box	CT
End Cable Tap Box Straight Bar	TS
End Cable Tap Box Offset Bar	TO
End Stub Straight Bar	SS
End Stub Offset Bar	OS
End Box	EB
Tee - Right	TR
Tee - Left	TL
Tee - Down	TD
Tee - Up	TU
Cross Up/Down	CD
Cross Left/Right	CL
Adjustable Length	AL
Reverse Fitting	RF
End Stub	ES

Type	Feet	Code
Plug-in	2	02
	6	06
	10	10

Guide Form Specifications

DRAWING NOTES FOR TYPE DH PLUG-IN BUSWAY

The following information should appear on the electrical drawings:

1. Ampere rating, continuous.
2. Service: _____ phase, _____ wire, _____ volts, with or without internal ground.
3. Available short circuit current at input end in amperes, rms symmetrical.
4. Maximum voltage drop and power factor output, whether distributed or concentrated load.
5. Bus bar material (aluminum or copper).
6. Location of all fittings.
7. Limiting dimensions of busway width and depth where passing through walls or floors, or around obstructions.
8. Mounting position of busway (flatwise, edgewise, or vertical riser).

Busway shall be of the plug-in Type DH as manufactured by General Electric Company.

All components and fittings necessary to provide a complete system as shown on plans or specifications shall be provided. All components shall be listed by Underwriter's Laboratories, Inc. and so labeled.

RATINGS

100 amperes continuous at maximum 55°C rise above 40°C maximum ambient, 600 volts. Short circuit rating 14,000 amperes symmetrical. System shall be polarized. Maximum 2.6 voltage drop factor carrying rated load equally distributed along the run. (Check one)

- Single-phase, 3-wire
- Single-phase, 3-wire with ground
- Three-phase, 3-wire
- Three-phase, 3-wire with ground
- Three-phase, 4-wire
- Three-phase, 4-wire with ground

CONSTRUCTION

Busway shall be of the totally enclosed type consisting of formed sheet-steel housing with external mounting flanges. Bus bars shall be (aluminum-electro-silver plated) (copper-tin plated) on insulating supports. Joint between components shall be assembled by placing overlapping parts together and tightening six screws. It shall be possible to remove any component from run without disturbing any other components.

PLUG-IN OUTLETS

Outlets shall be of the steel knockout type. Ten outlets shall be provided per 10-foot length, five on each side. All outlets may be used at one time.

ADJUSTABLE LENGTH (INCLUDED IF REQUIRED)

An adjustable length shall be included in the bus run to accommodate on site field adjustments. Fitting shall be adjustable from 42 to 54 inches (10KA Max. Only).

PLUGS

Plugs shall be as follows (Check one):

- Unfused type rated 60 amperes. Use wire connected to the unfused plug rated minimum $\frac{1}{3}$ of busway rating per NEC Article 240-21.
- Fusible - externally operated.
- Plug-in circuit breaker type using GE Type TQL breakers.
- Plug-in circuit breaker type using GE Type TSQL breakers, including space and mounting bracket for 1-, 2-, or 3-single-gang convenience outlets. Include divisible blank cover.
- Externally-operated type using GE Type TQL breakers and provided with hookstick operation.
- Bolted-in circuit breaker type using GE Type TED-frame breakers, including space and mounting bracket for 1, 2, or 3 conventional outlets in cover plus on each side. Include blank covers to fill unused spaces.
- Operating-switch type, quick-make quick-break interlocked-cover with releasable interlock.
- Circuit-breaker type using GE molded-case breakers externally-operated, suitable for end or bottom operation (Included if required).
- Provide combination ground-detector-neutralizer plug unit on each busway run.
- Provide combination motor starter plugs having (fusible switch) (molded-case circuit breaker) disconnects.



GE Electrical Distribution & Control

*General Electric Company
41 Woodford Ave., Plainville, CT 06062*

GET-9001A 0195 BLJ

© 1995 General Electric Company